

# VRF OUTDOOR 2026



## VRF MODE SWITCH (MS) BOX



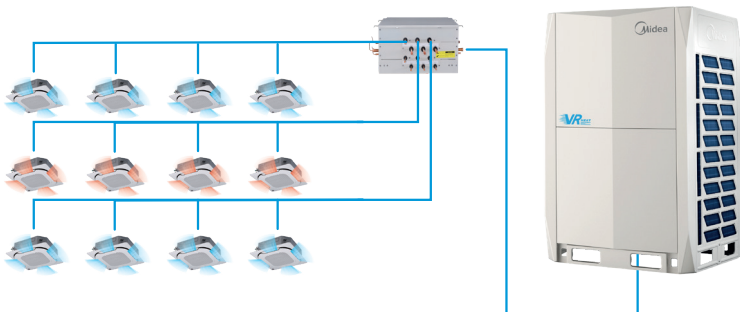
Midea MS boxes, with built-in solenoid valves, switch the operation mode of the indoor units. This allows different groups of units connected to the MS box to work simultaneously in different modes: cooling or heating, with precisely selected performance.

### INNOVATIVE MODE SWITCH (MS) BOX

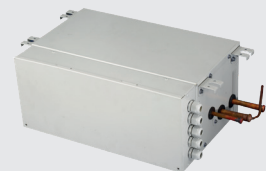
Simultaneous cooling and heating achieved for new designed MS (Mode Switch) box.

- Low noise operation for precise control of multiple solenoid valves.
- Max. 24 indoor units connect to a MS box.
- Max. 56kW indoor units connect to a MS box.

Indoor units connected to a same MS can realise simultaneous cooling and heating operation.



## VRF MODE SWITCH (MS) BOX



MS01/N1-D1



MS04/N1-D



MS06/N1-D



MS08/N1-D



MS10/N1-D



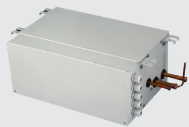
MS12/N1-D

# VRF OUTDOOR 2026



## VRF MODE SWITCH (MS) BOX

MODEL		MS01/N1-D1	MS04/N1-D	MS06/N1-D	MS08/N1-D	MS10/N1-D	MS12/N1-D		
Power Supply	V-Hz-Ph	220-240V,1Ph,50Hz							
Recommended Fuse Size	A	5	5	5	5	5	5		
Max. number of indoor unit groups		1	4	6	8	10	12		
Max. number of units per group		8	5	5	5	5	5		
Max. number of downstream indoor units		8	20	30	40	47	47		
Max. capacity of each group of indoor units	kW	32	16	16	16	16	16		
Max. total capacity of all downstream indoor units	kW	32	49	63	85	85	85		
Piping Connections	Connected to outdoor unit	Liquid Pipe	mm	Ø9.53 / 12.7	Ø9.53 / 12.7 / 15.9 / 19.1	Ø9.53 / 12.7 / 15.9 / 19.1	Ø12.7 / 15.9 / 19.1 / 22.2	Ø12.7 / 15.9 / 19.1 / 22.2	Ø12.7 / 15.9 / 19.1 / 22.2
		Liquid Pipe	inch	Ø3/8 / 1/2	Ø3/8 / 1/2 / 5/8 / 3/4	Ø3/8 / 1/2 / 5/8 / 3/4	Ø1/2 / 5/8 / 3/4 / 7/8	Ø1/2 / 5/8 / 3/4 / 7/8	Ø1/2 / 5/8 / 3/4 / 7/8
		Low Pressure Gas Pipe	mm	Ø15.9 / 19.1 / 22.2	Ø19.1 / 22.2 / 28.6	Ø19.1 / 22.2 / 28.6	Ø22.2 / 28.6 / 34.9	Ø22.2 / 28.6 / 34.9	Ø22.2 / 28.6 / 34.9
		Low Pressure Gas Pipe	inch	Ø5/8 / 3/4 / 7/8	Ø3/4 / 7/8 / 1 1/8	Ø3/4 / 7/8 / 1 1/8	Ø7/8 / 1 1/8 / 1 3/8	Ø7/8 / 1 1/8 / 1 3/8	Ø7/8 / 1 1/8 / 1 3/8
		High Pressure Gas Pipe	mm	Ø12.7 / 15.9 / 19.1	Ø15.9 / 19.1 / 22.2 / 28.6	Ø15.9 / 19.1 / 22.2 / 28.6	Ø19.1 / 22.2 / 28.6	Ø19.1 / 22.2 / 28.6	Ø19.1 / 22.2 / 28.6
		High Pressure Gas Pipe	inch	Ø1/2 / 5/8 / 3/4	Ø5/8 / 3/4 / 7/8 / 1 1/8	Ø5/8 / 3/4 / 7/8 / 1 1/8	Ø3/4 / 7/8 / 1 1/8	Ø3/4 / 7/8 / 1 1/8	Ø3/4 / 7/8 / 1 1/8
	Connected to indoor unit	Liquid Pipe	mm	Ø6.35/9.53	Ø6.35/9.53	Ø6.35/9.53	Ø6.35/9.53	Ø6.35/9.53	Ø6.35/9.53
		Liquid Pipe	inch	Ø1/4 / 3/8	Ø1/4 / 3/8	Ø1/4 / 3/8	Ø1/4 / 3/8	Ø1/4 / 3/8	Ø1/4 / 3/8
		Gas Pipe	mm	Ø12.7/Ø15.9	Ø12.7/Ø15.9	Ø12.7/Ø15.9	Ø12.7/Ø15.9	Ø12.7/Ø15.9	Ø12.7/Ø15.9
		Gas Pipe	inch	Ø1/2 / 5/8	Ø1/2 / 5/8	Ø1/2 / 5/8	Ø1/2 / 5/8	Ø1/2 / 5/8	Ø1/2 / 5/8
	Net Dimensions (WxHxD)	mm	440x195x296	668x250x574	668x250x574	974x250x574	974x250x574	974x250x574	
	Packing size (WxHxD)	mm	740x275x405	1020x390x850	1020x390x850	1320x390x850	1320x390x850	1320x390x850	
Net Weight	kg	10.5	33	36	48	51	54		
Gross Weight	kg	14	58	61	79	82	85		



1-Way



4-Way



6-Way



8-Way



10-Way



12-Way