

VRF INDOORS 2026



VRF MEDIUM STATIC PRESSURE DUCTED



Auto Restart Function



Auto Addressing



Fresh Air



Independent Dehumidification



Built-in Filter



Auto Defrosting



Follow Me



Anti-cold Air Function



Built-in Drain Pump



Timer



Wired Controller



Super High Air Flow

The Medium Static Pressure Ducted unit offers a discreet, high-performance solution for delivering consistent comfort across a range of spaces. Its compact design allows easy installation within shallow ceiling voids, making it ideal for projects where space is limited.

COMPACT DESIGN

Compact dimensions allow the unit to be easily installed in ceiling voids with a height of only 245 mm.

PRECISE TEMPERATURE CONTROL

Set temperature can be adjusted in 0.5°C or 1°C steps, enabling precise comfort control.

STANDARD DRAIN PUMP

Drain pump with a 1200 mm pump head is built in as standard.

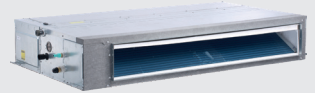
AIR FLOW

An independent drive chip enables precise airflow control and output on demand. The unit automatically adapts to external static pressure from 10 to 160 Pa without installer adjustment.

QUIET OPERATION

Sound levels as low as 22 dB(A) create a comfortable and quiet environment.

SYSTEM COMPONENTS



Indoor unit



WDC3-86S



WDC3-86T



WDC3-120T



RM23A

VRF INDOORS 2026



VRF MEDIUM STATIC PRESSURE DUCTED

MODEL			MIH15T2N18	MIH22T2N18	MIH28T2N18	MIH36T2N18	MIH45T2N18	MIH56T2N18
Power Supply	V-Ph-Hz	220-240V,1Ph,50Hz						
Recommended Fuse Size	A	5	5	5	5	5	5	5
Interconnecting Wiring	No.	2 / 3 Core Screened 0.75mm ²						
Capacity	Cooling total	kW	1.5	2.2	2.8	3.6	4.5	5.6
	Cooling sensible	kW	1.3	1.8	2.3	3	3.7	4.6
	Heating	kW	1.8	2.5	3.2	4	5	6.3
Indoor Air flow Rate (High to Low)	m ³ /h	470/438/407/375/ 343/312/280	500/467/433/400/ 367/333/300	540/503/467/430/ 393/357/320	575/535/495/455/ 415/375/335	665/623/580/538/ 495/453/410	970/904/838/773/ 707/641/575	
External static pressure - Standard Min/Max	Pa	30 (10-160)	30 (10-160)	30 (10-160)	30 (10-160)	30 (10-160)	30 (10-160)	30 (10-160)
Indoor Sound Pressure Level (High to Low)	dB(A)	26.5/26/25/24/ 23/22.5/22	26.5/26/25/24/ 23/22.5/22	26.5/26/25/24/ 23/22.5/22	29/28/27/26/ 25/23/22	33/32/29.5/28/ 26.5/25/24	33/32/31/30/ 27.5/26/25	
Net Dimensions (WxHxD)	mm	600x245x750	600x245x750	600x245x750	600x245x750	600x245x750	600x245x750	800x245x750
Packing Dimensions (WxHxD)	mm	765x305x885	765x305x885	765x305x885	765x305x885	765x305x885	765x305x885	765x305x885
Supply Plenum (WxH)	mm	400x179	400x179	400x179	400x179	400x179	400x179	600x179
Return Plenum (WxH)	mm	209x490	209x490	209x490	209x490	209x490	209x490	690x209
Net/Gross Weight	kg	18.5/21	18.5/21	18.5/21	18.5/21	18.5/21	19.5/22	24/27.5
Piping Connections	Liquid/Gas Pipe	mm(inch)	Ø6.35/Ø12.7 (1/4/ 1/2)	Ø6.35/Ø12.7 (1/4/ 1/2)	Ø6.35/Ø12.7 (1/4/ 1/2)	Ø6.35/Ø12.7 (1/4/ 1/2)	Ø6.35/Ø12.7 (1/4/ 1/2)	Ø6.35/Ø12.7 (1/4/ 1/2)
	Drain Pipe	mm	OD Ø25	OD Ø25	OD Ø25	OD Ø25	OD Ø25	OD Ø25

MODEL			MIH71T2N18	MIH80T2N18	MIH90T2N18	MIH112T2N18	MIH125T2N18	MIH140T2N18	MIH160T2N18
Power Supply	V-Ph-Hz	220-240V,1Ph,50Hz							
Recommended Fuse Size	A	5	5	5	5	5	5	5	5
Interconnecting Wiring	No.	2 / 3 Core Screened 0.75mm ²							
Capacity	Cooling total	kW	7.1	8	9	11.2	12.5	14	16
	Cooling Sensible	kW	5.8	6.5	7.3	9.1	10.1	11.3	12.9
	Heating	kW	8	9	10	12.5	14	16	18
Indoor Air flow Rate (High to Low)	m ³ /h	1150/1068/986/ 904/822/740/660	1355/1263/1172/ 1080/988/897/805	1420/1323/1225/ 1128/1030/933/835	1950/1817/1683/ 1550/1417/1283/1150	2105/1971/1837/ 1703/1568/1434/1300	2105/1971/1837/ 1703/1568/1434/1300	2350/2160/2015/ 1871/1776/1533/1400	
External static pressure- Standard Min/Max	Pa	30 (10-160)	40 (10-160)	40 (10-160)	40 (10-160)	50 (10-160)	50 (10-160)	50 (10-160)	50 (10-160)
Indoor Sound Pressure Level (High to Low)	dB(A)	35/33.5/32/ 30.5/29/27.5/26	37/35.5/34/ 32.5/31/29.5/28	37/35.5/34/ 32.5/31/29.5/28	39/37/35/ 33/31/29/28	40/38/36/ 34/32/30/29	40/38/36/ 34/32/30/29	42/40/38/ 36/34/33/31	
Net Dimensions (WxHxD)	mm	800x245x750	1050x245x750	1050x245x750	1400x245x750	1400x245x750	1400x245x750	1400x245x750	1400x245x750
Packing Dimensions (WxHxD)	mm	965x305x885	1215x305x885	1215x305x885	1565x305x885	1565x305x885	1565x305x885	1565x305x885	1565x305x885
Supply Plenum (WxH)	mm	600x179	850x179	850x179	1200x179	1200x179	1200x179	1200x179	1200x179
Return Plenum (WxH)	mm	690x209	940x209	940x209	1290x209	1290x209	1290x209	1290x209	1290x209
Net/Gross Weight	kg	25/28.5	30/34	31/35	37/42	39/44	39/44	39/44	39/44
Piping Connections	Liquid/Gas Pipe	mm(inch)	Ø9.53/Ø15.9 (3/8/ 5/8)	Ø9.53/Ø15.9 (3/8/ 5/8)	Ø9.53/Ø15.9 (3/8/ 5/8)	Ø9.53/Ø15.9 (3/8/ 5/8)	Ø9.53/Ø15.9 (3/8/ 5/8)	Ø9.53/Ø15.9 (3/8/ 5/8)	Ø9.53/Ø15.9 (3/8/ 5/8)
	Drain Pipe	mm	OD Ø25	OD Ø25	OD Ø25	OD Ø25	OD Ø25	OD Ø25	OD Ø25

Nominal Conditions: Cooling: indoor 27°C DB, 19°C WB; outdoor 35°C DB, 24°C WB.
Nominal Conditions: Heating: indoor 20°C DB, outdoor 7°C DB, 6°C WB.

Unit body dimensions are the largest external Dimensions of the unit, including hanger attachments.
Sound Pressure is measured 1.5m below the air-outlet at Nominal Conditions.

DATA IS SUBJECT TO CHANGE, SCAN THE QR CODE FOR MOST RECENT PRODUCT INFORMATION