

# VRF INDOORS 2026



## VRF HIGH STATIC PRESSURE DUCTED



- Auto Restart Function
- Auto Addressing
- Timer
- Independent Dehumidification
- Built-in Filter
- Auto Defrosting
- Follow Me
- Anti-cold Air Function
- Wired Controller
- Built-in Drain Pump

The Midea VRF High Static Pressure Ducted unit is engineered for powerful, long-distance airflow, making it ideal for large or complex spaces. With capacities up to 56 kW from a single unit, it offers a highly efficient solution for a wide range of commercial applications.

### UP TO 56 KW FROM A SINGLE UNIT

Available in capacities from 5.6 kW up to 56 kW, providing a solution for a wide range of applications. Units from 5.6 kW to 16 kW feature a compact height of just 299 mm, making them suitable for installation in restricted spaces.

### ULTRA-HIGH STATIC PRESSURE

Static pressure of up to 250 Pa (5.6-16 kW) or 400 Pa (20-56 kW) enables extended air supply distances. This is particularly beneficial in long, narrow spaces such as corridors, helping to reduce the number of units required and lowering installation costs.

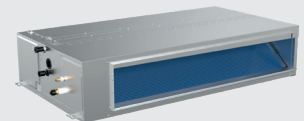
### STANDARD DRAIN PUMP

Drain pump with a 1200 mm pump head is built in as standard.

### FLEXIBLE CONTROL AND EASY MAINTENANCE

A built-in LED display enables quick troubleshooting. Filters are easily accessible from the rear and bottom, with convenient access to control ports such as remote on/off dry contact.

## SYSTEM COMPONENTS



Indoor unit



WDC3-86S



WDC3-86T



WDC3-120T



RM23A

# VRF INDOORS 2026



## VRF HIGH STATIC PRESSURE DUCTED

MODEL		MIH56T1N18	MIH7T1N18	MIH80T1N18	MIH90T1N18	MIH112T1N18	MIH125T1N18	MIH140T1N18	MIH160T1N18	
Power Supply	V-Ph-Hz	220-240V,1Ph,50Hz								
Recommended Fuse Size	A	5	5	5	5	5	5	5	5	
Interconnecting Wiring	No.	2 / 3 Core Screened 0.75mm <sup>2</sup>								
Capacity	Cooling total	kW	5.6	7.1	8	9	11.2	12.5	14	16
	Cooling sensible	kW	4.7	6	6.7	7.5	9.3	10.2	11.4	13.1
	Heating	kW	6.3	8	9	10	12.5	14	16	18
Indoor Air flow Rate (High to Low)	m <sup>3</sup> /h	1360/1281/1201/1122/1043/963/884	1360/1281/1201/1122/1043/963/884	1360/1281/1201/1122/1043/963/884	1500/1413/1325/1238/1150/1063/975	2140/2015/1890/1766/1641/1516/1391	2150/2025/1899/1774/1649/1523/1398	2400/2260/2120/1980/1840/1770/1560	2600/2448/2297/2145/1993/1842/1690	
External static pressure (Min/Std/Max)	Pa	80 (0-250)	80 (0-250)	80 (0-250)	80 (0-250)	80 (0-250)	100 (0-250)	100 (0-250)	100 (0-250)	
Indoor Sound Pressure Level (High to Low)	dB(A)	39/38/36/35/33/32/30	39/38/36/35/33/32/30	39/38/36/35/33/32/30	40/39/37/36/34/33/31	41/40/38/37/35/34/32	41/40/39/37/36/35/33	43/42/40/39/37/36/34	44/43/41/40/38/37/35	
Net Dimensions (WxHxD)	mm	1050×299×750	1050×299×750	1050×299×750	1050×299×750	1400×299×750	1400×299×750	1400×299×750	1400×299×750	
Packing Dimensions (WxHxD)	mm	1215×359×890	1215×359×890	1215×359×890	1215×359×890	1565×359×890	1565×359×890	1565×359×890	1565×359×890	
Supply Plenum (WxH)	mm	850x233	850x233	850x233	850x233	1200x233	1200x233	1200x233	1200x233	
Return Plenum (WxH)	mm	940x263	940x263	940x263	940x263	1290x263	1290x263	1290x263	1290x263	
Net/Gross Weight	kg	35/38.5	35/38.5	35/38.5	35/38.5	44.5/48.5	46.5/50.5	46.5/50.5	46.5/50.5	
Piping Connections	Liquid/Gas Pipe	mm(inch)	Ø6.35/Ø12.7 (1/4/ 1/2)	Ø9.53/Ø15.9 (3/8/ 5/8)	Ø9.53/Ø15.9 (3/8/ 5/8)	Ø9.53/Ø15.9 (3/8/ 5/8)	Ø9.53/Ø15.9 (3/8/ 5/8)	Ø9.53/Ø15.9 (3/8/ 5/8)	Ø9.53/Ø15.9 (3/8/ 5/8)	
	Drain Pipe	mm	OD Ø25	OD Ø25	OD Ø25	OD Ø25	OD Ø25	OD Ø25	OD Ø25	

MODEL		MIH200T1N18	MIH224T1N18	MIH252T1N18	MIH280T1N18	MIH335T1N18	MIH400T1N18	MIH450T1N18	MIH560T1N18	
Power Supply	V-Ph-Hz	220-240V,1Ph,50Hz								
Recommended Fuse Size	A	10	10	10	10	10	20	20	20	
Interconnecting Wiring	No.	2 / 3 Core Screened 0.75mm <sup>2</sup>								
Capacity	Cooling total	kW	20	22.4	25.2	28	33.5	40	45	56
	Cooling sensible	kW	16.3	18.3	20.5	22.8	27.3	32.5	36.6	45.8
	Heating	kW	22.5	25	26	31.5	38	45	50	63
Indoor Air flow Rate (High to Low)	m <sup>3</sup> /h	4700/4387/4073/3760/3447/3133/2820	4700/4387/4073/3760/3447/3133/2820	4700/4387/4073/3760/3447/3133/2820	4700/4387/4073/3760/3447/3133/2820	4700/4387/4073/3760/3447/3133/2820	7500/7000/6500/6000/5500/500/4500	7500/7000/6500/6000/5500/500/4500	8400/7840/7280/6720/6160/5600/5040	
External static pressure (Min/Std/Max)	Pa	200(0-400)	200(0-400)	200(0-400)	200(0-400)	200 (0-400)	300 (0-400)	300 (0-400)	300 (0-400)	
Indoor Sound Pressure Level (High to Low)	dB(A)	51/50/48/46/44/43/42	51/50/48/46/44/43/42	51/50/48/46/44/43/42	51/50/48/46/44/43/42	52/51/49/48/46/44/43	58/56/54/52/50/49/48	58/56/54/52/50/49/48	59/58/56/54/53/51/49	
Net Dimensions (WxHxD)	mm	1300×580×900	1300×580×900	1300×580×900	1300×580×900	1300×580×900	1850×580×900	1850×580×900	1850×580×900	
Packing Dimensions (WxHxD)	mm	1530×730×1060	1530×730×1060	1530×730×1060	1530×730×1060	1530×730×1060	2080×730×1060	2080×730×1060	2080×730×1060	
Supply Plenum (WxH)	mm	917x268	917x268	917x268	917x268	917x268	1452x268	1452x268	1452x268	
Return Plenum (WxH)	mm	990x456	990x456	990x456	990x456	990x456	1540x456	1540x456	1540x456	
Net/Gross Weight	kg	125/150	125/150	125/150	125/150	128/153	166/204	166/204	170/208	
Piping Connections	Liquid/Gas Pipe	mm (inch)	Ø9.53/Ø19.1(3/8/ 3/4)	Ø9.53/Ø19.1(3/8/ 3/4)	Ø12.7/Ø22.2 (1/2/ 7/8)	Ø12.7/Ø22.2 (1/2/ 7/8)	Ø12.7/Ø28.6 (1/2/ 1 1/8)	Ø12.7/Ø28.6 (1/2/ 1 1/8)	Ø15.8/Ø28.6 (5/8/ 1 1/8)	Ø15.8/Ø28.6 (5/8/ 1 1/8)
	Drain Pipe	mm	OD Ø32	OD Ø32	OD Ø32	OD Ø32	OD Ø32	OD Ø32	OD Ø32	

Nominal Conditions: Cooling: indoor 27°C DB, 19°C WB; outdoor 35°C DB, 24°C WB.  
Nominal Conditions: Heating: indoor 20°C DB, outdoor 7°C DB, 6°C WB.

Unit body dimensions are the largest external Dimensions of the unit, including hanger attachments.  
Sound Pressure is measured 1.5m below the air-outlet at Nominal Conditions.

**DATA IS SUBJECT TO CHANGE, SCAN THE QR CODE FOR MOST RECENT PRODUCT INFORMATION**